

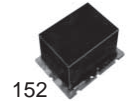
FREQUENCY DOUBLERS

LEADED SURFACE-MOUNT MODELS



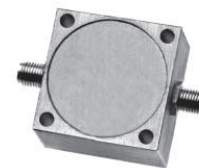
FREQUENCY RANGE (MHz)		INPUT POWER (dBm)		CONVERSION LOSS (dB)	SPURIOUS (dB)		PACKAGE	PIN-OUT (See Below)	MODEL
INPUT	OUTPUT	MIN	MAX	TYP/MAX	F1 TYP/MIN	F3 TYP/MIN			
1 - 500	2 - 1000	+ 4	+ 10	13.5/16.5	25/15	40/25	159	1	SLX-K3
50 - 750	100 - 1500♦	+ 6	+ 15	10.5/13.5	25/15	35/20	159	1	SLX-K5
50 - 1250	100 - 2500♦	+ 6	+ 15	10.5/13.5	30/20	35/20	159	1	SLX-K7
75 - 1500	150 - 3000♦	+ 10	+ 16	12.0/14.0	25/17	25/17	159	1	SLX-K8

LEADLESS SURFACE-MOUNT MODELS



FREQUENCY RANGE (MHz)		INPUT POWER (dBm)		CONVERSION LOSS (dB)	SPURIOUS (dB)		PACKAGE	PIN-OUT (See Below)	MODEL
INPUT	OUTPUT	MIN	MAX	TYP/MAX	F1 TYP/MIN	F3 TYP/MIN			
0.003 - 2.5	0.06 - 5	+ 4	+ 13	11.5/15.0	35/20	40/20	152	2	SMX-C1
0.005 - 25	0.01 - 50	+ 4	+ 13	11.5/15.0	35/20	40/20	152	2	SMX-C2
0.05 - 150	0.1 - 300	+ 4	+ 13	11.5/15.0	35/20	40/20	152	2	SMX-C3
1 - 500	2 - 1000	+ 4	+ 10	13.5/16.5	25/15	40/25	133	2	SMX-C4
50 - 750	100 - 1500♦	+ 6	+ 15	10.5/13.5	25/15	35/20	133	2	SMX-C5
50 - 1000	100 - 2000♦	+ 10	+ 20	12.5/16.0	20/12	35/16	133	2	SMX-C6
50 - 1250	100 - 2500♦	+ 6	+ 15	10.5/13.5	30/20	35/20	133	2	SMX-C7
75 - 1500	150 - 3000♦	+ 10	+ 16	12.0/14.0	25/17	25/17	133	2	SMX-C8
500 - 2000	1000 - 4000♦	+ 10	+ 16	12.0/17.0	15/10	20/15	133	2	SMX-C9

COAXIAL CONNECTOR MODELS



FREQUENCY RANGE (MHz)		INPUT POWER (dBm)		CONVERSION LOSS (dB)	SPURIOUS (dB)		PACKAGE	PIN-OUT (See Below)	MODEL
INPUT	OUTPUT	MIN	MAX	TYP/MAX	F1 TYP/MIN	F3 TYP/MIN			
0.05 - 150	0.1 - 300	0	+ 13	11.5/15.0	35/20	40/20	118	3	XK-703*
1 - 500	2 - 1000	+ 1	+ 15	13.5/16.5	25/15	40/25	118	3	XK-702*
50 - 1250	100 - 2500♦	+ 4	+ 20	10.5/13.5	30/20	35/20	118	3	XK-701*

♦Specifications are for operation at +13 dBm (nominal) input power. Nominal impedance is 50 ohms.

*Select female connector suffix: S=SMA, B=BNC, N=Type N, T=TNC

For pin location and package outline drawings, see back pages.

PIN-OUT TABLE

	INPUT	OUTPUT	GROUND	NO CONN.
# 1	1	4	2,3,5,6	---
# 2	1	2	4,5,6	3
# 3	1	2	---	---

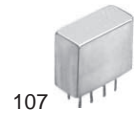
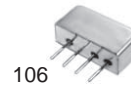
FREQUENCY DOUBLERS

THROUGH HOLE MOUNT 8 PIN - RELAY HEADER



FREQUENCY RANGE (MHz)		INPUT POWER (dBm)		CONVERSION LOSS (dB)	SPURIOUS (dB)		PACKAGE	PIN-OUT (See Below)	MODEL
INPUT	OUTPUT	MIN	MAX	TYP/MAX	F1 TYP/MIN	F3 TYP/MIN			
0.003 - 2.5	0.006 - 5	0	+ 10	11.5/15.0	35/20	40/20	102	1	XP-214
0.005 - 25	0.01 - 50	0	+ 10	11.5/15.0	35/20	40/20	102	1	XP-224
0.05 - 150	0.1 - 300	0	+ 13	11.5/15.0	35/20	40/20	102	2	XP-203
1 - 500	2 - 1000	+ 1	+ 15	13.5/16.5	25/15	40/25	102	1	XP-212
50 - 750	100 - 1500*	+ 4	+ 20	10.5/13.5	25/15	35/20	102	3	XP-204

MINI RELAY HEADER (4-pin and 8-pin)



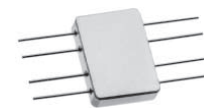
FREQUENCY RANGE (MHz)		INPUT POWER (dBm)		CONVERSION LOSS (dB)	SPURIOUS (dB)		PACKAGE	PIN-OUT (See Below)	MODEL
INPUT	OUTPUT	MIN	MAX	TYP/MAX	F1 TYP/MIN	F3 TYP/MIN			
1 - 500	2 - 1000	+ 1	+ 15	13.5/16.5	25/15	40/25	107	1	XP-402
1 - 500	2 - 1000	+ 1	+ 15	13.5/16.5	25/15	40/25	106	4	XP-322
75 - 1500	150 - 3000*	+ 10	+ 16	12.0/14.0	25/17	25/17	103	3	XP-316

TO-8 and TO-5



FREQUENCY RANGE (MHz)		INPUT POWER (dBm)		CONVERSION LOSS (dB)	SPURIOUS (dB)		PACKAGE	PIN-OUT (See Below)	MODEL
INPUT	OUTPUT	MIN	MAX	TYP/MAX	F1 TYP/MIN	F3 TYP/MIN			
50 - 1000	100 - 2000*	+ 4	+ 20	10.5/13.5	30/20	35/20	122	5	XP-601
50 - 1000	100 - 2000*	+ 4	+ 20	10.5/13.5	30/20	35/20	126	5	XP-801

FLAT PACK



FREQUENCY RANGE (MHz)		INPUT POWER (dBm)		CONVERSION LOSS (dB)	SPURIOUS (dB)		PACKAGE	PIN-OUT (See Below)	MODEL
INPUT	OUTPUT	MIN	MAX	TYP/MAX	F1 TYP/MIN	F3 TYP/MIN			
50 - 1250	100 - 2500*	+ 4	+ 20	10.5/13.5	30/18	35/20	101	6	XF-111

* Pins must be connected together externally

♦ Specifications are for operation at +13 dBm (nominal) input power.

Nominal impedance is 50 ohms.

For pin location and package outline drawings, see back pages.

PIN-OUT TABLE

	INPUT	OUTPUT	GROUND	CASE GROUND
# 1	*1,3,4	8	2,5,6,7	2,5,6,7
# 2	*1,3,4	8	2,5,6,7	2
# 3	1	8	All Other	All Other
# 4	*1,2	4	3	3
# 5	1	3	2,4	2,4
# 6	5	4	All Other	All Other